



SWANA[®]

SOLID WASTE ASSOCIATION
of North America

Mid-Atlantic Chapter Solid Waste Association of North America

SOLID WASTE NEWS For Waste Professionals

August 11, 2005

Mid-Atlantic Chapter of SWANA Board of Directors

President

Mike Houlihan
GeoSyntec

Vice-President

Martin Sanford
Camp, Dresser & McKee

Secretary

Doug Sawyers
Malcolm Pirnie, Inc.

Treasurer

Elizabeth Smolen
Prince Georges County

Chapter Director

Stephen Lippy
Baltimore County

Past President

Evelyn Tomlin
Howard County

Directors

Robert DeMarco
Anne Arundel County

Tony Duckett
Washington DC, SWCD

Frank Henderson
Harford County

Tom Houska
Delaware Solid Waste Authority

Francis Jones
Calvert County

Dana Murray
SCS Engineers

Laura Thomson
*Northeast Maryland Waste
Disposal Authority*

Mehal Trivedi
Frederick County

President's Message

By: Mike Houlihan

This edition of the Mid-Atlantic Chapter Newsletter marks the end of our chapter year. This year was very successful for the Chapter, thanks to the efforts of Board members and the participation of many members. As you will see in articles in this newsletter, we had a very busy June, when Chapter members attended the SWANA Landfill Symposium, the Chapter's Spring Technical Seminar, and the Chapter's annual crab feast. The Technical Seminar was held jointly with the Maryland Recycling Coalition in Catonsville and featured a variety of solid waste and recycling technical sessions. The seminar also provided an opportunity for networking and discussion with a broader range of professionals for our members, and was also a financial success! We are considering this same arrangement for our Spring Technical Seminar next year. The Landfill Symposium provided technical content and

training opportunities on many landfill-related topics. And the crab feast provided a welcome, fun end to a busy week. At the crab feast, we presented scholarship awards to five individuals, whose education and development we are proud to support.

In this edition of the newsletter, you will see a notice of the upcoming Chapter Annual Meeting, as well as a list of nominees for Board of Directors for the upcoming year. The Annual Meeting will be held in Delaware and will include same-day tours of DSWA solid waste facilities. At the start of the meeting, we will hold the election of new officers. I hope that you will be able to join us for this educational day with many of your colleagues. I would also like to thank the current Board Members for their hard work, which has resulted in another very successful year for our Chapter. We'll see you in Delaware!

Crab Feast 2005

Dana Murray of SCS Engineers, Chairperson of the Programs Committee for the Mid-Atlantic Chapter, reports that the Chapter's 2005 Crab feast on June 10th was a blast! For the first time on record (maybe a slight exaggeration), attendees were graced with gorgeous weather. The kids were especially happy as they were able to go swimming in the Bay. The weekend has been officially rescheduled – plan for next year's Crab feast on the second weekend in June. Thanks to everyone who helped to make this event such a success!

NOMINATIONS FOR BOARD OF DIRECTORS

President	Michael Houlihan (<i>GeoSyntec Consultants</i>)
Vice President	Martin Sanford (<i>Camp, Dresser & McKee</i>)
Secretary	Doug Sawyers (<i>Malcolm Pirnie, Inc.</i>)
Treasurer	Elizabeth Smolen (<i>Prince George's County</i>)
Chapter Director	Stephen Lippy (<i>Baltimore County, BSWM</i>)
Past President	Evelyn Tomlin (<i>Howard County</i>)
Director	Bob DeMarco (<i>Anne Arundel County</i>)
Director	Frank Henderson (<i>Harford Co., Env. Affairs</i>)
Director	Mehal Trivedi (<i>Frederick Co., Util. & SWM</i>)
Director	Tom Houska (<i>DE Solid Waste Authority</i>)
Director	Dana Murray (<i>SCS Engineers</i>)
Director	Laura Thomson (<i>NMWWDA</i>)
Director	Tony Duckett (<i>Washington DC, SWCD</i>)
Director	Francis Jones (<i>Calvert County</i>)

There is an open director position—nominations may be taken from the floor at the Annual Meeting.

Annual Chapter Elections to be held at the Annual Meeting on September 14th (see inside for details). For those of you unable to attend, please complete the Ballot on page 3 of this newsletter.

SWANA E-Cycling Tours

By: Amanda Ohler

On May 18th, SWANA members toured two facilities that recycle electronic materials. Subtractions, LLC, in Laurel, Maryland was the first facility visited. Subtractions accepts materials from anyone in Maryland and the surrounding area. At the facility, monitors are separated into groups based on their size, and are prepared for resale. The computers are dismantled and the plastic is shredded in a shredder. Besides the shredder, most of the material is dismantled by hand. Subtractions, LLC sells some parts of the electronic equipment, such as metals and plastics, but they also sell monitors, processors, etc. on eBay. To ensure security, the hard drives are removed and erased or destroyed. Subtractions has found that there are many outlets for electronic material and the components that make up those electronic items.

The next facility SWANA members toured was E-Structors,

Inc., which is an electronic materials recycling facility that operates differently from Subtractions. At this facility, everything is run through an enormous shredder, which reduces the items to pieces no larger than 1.5". For safety reasons, monitors are not shredded and are not handled at this facility. The shredder is equipped with a metal (ferrous and non ferrous) separator. The plastics are also separated out and everything is then sold at market value.

Both facilities can provide documents of destruction and/or recycling and some materials can be tracked via serial number or asset tags. For more information, please visit www.mdrecycles.org, www.subtractions.net, or www.e-shred.com.

Eastern Sanitary Landfill Update

By: Steve Lippy

Comer Construction has finished the mass excavation job for Phase IX at the Baltimore County Eastern Sanitary Landfill Solid Waste Management. Cherry Hill mobilized August 1 to begin the construction of the base liner. The engineer's estimate for the base liner was \$3.18 million and the low bid was \$3.2 million! We seldom can brag on that type of accuracy. On July 28 bids were opened for a leachate force main to tie into the County sewerage system; PAVEX was the low bidder. However, we can not brag on our accuracy on this one as it was 90% off, fortunately on the high side.

Eastern Landfill Gas is still progressing with obtaining the necessary permits to construct the LFG electrical generating units at ESL. This project to get a developer to beneficially use the LFG started in 1997 and may even be operational before Steve Lippy decides to retire.

Tony Nordwall, Landfill Supervisor (SWANA member and MOLA certified) with Baltimore County, has recently started an extended vacation before he officially retires from the County after 30+ years. Enjoy your retirement, Tony!

SWANA's Mid-Atlantic Chapter Combines Efforts with MRC

The Chapter's Annual Spring Technical Seminar was produced with a twist this year – in conjunction with the MRC's annual conference. This event was put on as a result of significant coordination between the Chapter and MRC, with Dana Murray leading the charge for the Chapter. Initial feedback from the members indicates that this collaboration was a success, and the Board will consider further collaboration next year.

Our appreciation goes out to all of the sponsors, organizers, moderators, and presenters that made this year's conference so worthwhile! And a special thanks to Dana as well for her efforts!

SWANA invites the Mid-Atlantic Chapter to



The conference where solid waste professionals shine bright



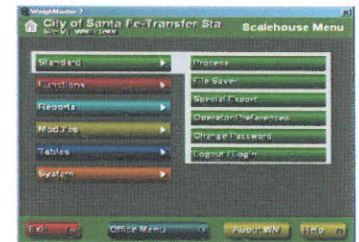
Save the date!

September 27-29 ★ Austin, TX

For details, visit www.WASTECON.org

Information Systems, Inc. WeighMaster 7®

Information Systems, Inc. offers solid-waste scale software for landfills, transfer stations, and WTE plants.



The WeighMaster System offers accounting and reporting. ISI provides both fully and partially automated systems.

www.isi-infosys.com

Extraordinary Achievement Award

Increasing Efficiency by Compacting Recyclables

The goal of every County Recycling Office is to maximize recycling activity in the County. Increasing recycling activity and the amount of material recycled is a good thing for many reasons: it saves landfill space, it saves natural resources, it offers economic benefits, and recycling is key to sustaining our quality of life for many years to come. However, increased recycling tonnage has to be hauled, handled and processed; much like trash. For years, a common practice in managing and transporting trash has been to compact it. Compaction maximizes the amount of material that can be put in a specific amount of space. Trash is compacted in collection vehicles, at residential drop off centers and at landfills. As the amount of recyclables collected continues to increase, why not handle them in the same manner as trash?

Compacting recyclables makes sense for all the same reasons that compacting trash makes sense. Anne Arundel County's Waste Management Services (WMS) first began compacting recyclables when their curbside collection contracts for paper, cans, bottles, and jars, trash and yard waste were rebid in 2000. The County's recycling processor suggested that the County give bidders the option of using a rear loading compacting truck or a standard recycling truck. Many bidders chose to use the rear loader, which allowed them to use one truck for paper collection, and another truck for collecting cans, bottles and jars. Still others chose to use a split hopper rear load truck so that they could collect paper and cans, bottles and jars at the same time. Using the rear loading compactors increased the amount of paper collected from 2.5 tons to 7 tons per load (180% increase). Those trucks hauling cans, bottles and jars increased from 1.5 tons per load to 4 tons per load (167% increase).

WMS operates the Millersville Landfill and Resource Recovery Facility as well as Convenience Centers in Glen Burnie and Sudley (north and south, respectively). The Convenience Centers are drop off facilities designed for residents to self haul recycling, trash and some larger items that are hard to handle in the curbside collection program. Approximately 790,000 customers visit the County's landfill and convenience centers each year delivering approximately 172,000 tons of material that must be managed and/or hauled off site. Trash has always been compacted and it became obvious that compacting recyclables made just as much sense.

Responding to the on-going challenge to handle more materials with less time, resources, manpower and money, the Glen Burnie Convenience Center started using a large stationary compactor building to compact cans, bottles and jars into transfer trailers. The change decreased the number of hauls required each month from 8 to 3, resulting in a 266% increase in productivity. This modification was so successful that plans for upgrading the Glen Burnie Convenience Center include adding 40 cubic yard stationary compactors for handling cans, bottles, jars and cardboard.

Shortly after, Sudley Convenience Center also began using a 40 cubic yard stationary compactor for cans, bottles and jars. In doing so, Sudley decreased their hauls each month from 5 to 1, resulting in a 500% increase in productivity. The Millersville Convenience Center is consolidating 3, 20 cubic yard dumpsters of cans, bottles, and jars into 1, 45 cubic yard dumpster haul. This decreased their hauls from 3 to 1 per month, resulting in a 300% increase in productivity. Initially there were some concerns about the marketability of the compacted recyclables and possible increase in glass breakage. However, the County's recycling processor has confirmed that there have not been any problems with the material or its marketability.

Anne Arundel County found that it is not necessary to compact paper at the Convenience Centers since paper tends to compact under its own weight. Instead, the County began utilizing larger dumpsters for collecting paper. Using a 40 or 45 cubic yard dumpster with adjacent stairs and platform allows customers to easily drop material in it. The County plans to build a new ramp for customers to more easily access the taller dumpsters.

All of these changes provide a savings in hauling, operation and personnel costs. Stationary compactors can cost anywhere from \$35,000 - \$65,000 depending upon the type and size of the compactor and the size of the dumpster cans. Based on the price of a compactor and the savings realized by the reduced hauls, the County determined that, on average, the return on investment is approximately 5 years. Obviously, the distance of the haul and the cost per haul will factor into the total return. An additional benefit realized is that by reducing the hours on the road, WMS truck drivers are able to dedicate more time to site operations thereby increasing facility staff hours and productivity at the County's facilities. It also eliminates the need to hire additional truck drivers.

WMS realizes that being in the recycling and trash business also means more than ever being in the hauling business. Therefore, compacting recyclables and handling them much like trash is handled has been a good operational and business decision for Anne Arundel County. It demonstrates how to better utilize resources in an efficient manner and how to work smart.

Other MRC 2005 awards included: Outstanding Environmental and Community Leadership Award presented to the Frostburg State University Sierra Student Coalition; and Best Market Development Program Award presented to the NE MD Waste Disposal Authority.

ANNUAL MEETING BALLOT VOTE No. _____

Please fax or mail your proxy to Laura Thomson by 5 p.m. on September 9, 2005
Fax: (410) 333-2721 or Mail: NMWDA, Tower II - Ste. 402, 100 S. Charles Street, Baltimore, MD 21201

I cannot attend the Annual Meeting, please accept my mail-in ballot. I am a member in good standing of the Mid-Atlantic Chapter of SWANA. I do hereby approve the slate offered by the nominations committee.

Yes _____ No _____ (Please complete nomination section below if applicable.)

I nominate and vote for the following candidate(s):

name(s)

position(s)

(Numbering of ballots assures that duplicate ballots are not submitted)

<Subtractions, LLC>

Your Computer and Electronic Recyclers

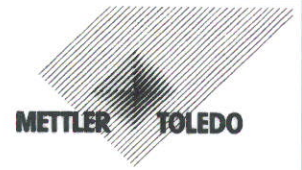
Sarah Manning / Scott Wilson: 301.362.4000

Steve Kullen: 443.538.4956

For all of your corporate, government and residential computer and electronic recycling needs, contact Subtractions, LLC. With nearly a decade of service to Maryland, D.C., and Virginia — we are here to serve you!



www.Subtractions.net



David Baechtold

Vehicle Scale Specialist
(410) 990-0248

Fax: (410) 990-0360
dave.baechtold@mt.com

Mettler-Toledo, Inc.
912 Langdon Ct.
Annapolis, MD 21403
www.mtf.com

Two SWANA Mid-Atlantic Chapter Scholarships Presented

On June 22nd, 2005, Steve Lippy, SWANA member-extraordinaire, gave 2005 scholarship award checks to two individuals, whose parents are employed by Baltimore County. James Spamer and Michael Vlach were recognized at the County Bureau of Solid Waste Town Meeting.

Congratulations to Mr. Spamer and Mr. Vlach, and best of luck to them in their studies!

The CompuWeigh System™ The Standard in Weighing and Routing Software

Call for a free demo or download if from our web site at

www.ParadigmSoftware.com

Landfills
Transfer Stations
Recycling

For more information call
(410) 828-9223

Routing
Container Tracking
Integrated Accounting

Real-Time Transaction Processing
SQL, MSDE Access or Oracle Database



Mid-Atlantic Chapter

Solid Waste Association of North America
c/o Northeast Maryland Waste Disposal Authority
Tower II - Suite 402, 100 South Charles Street
Baltimore, MD 21201-2705